



Charles Darwin University

Annual Report

2024 year in review

You make CDU



The Hon Jo-Anne (Jo) Hersey
Northern Territory Minister for Education and Training

Dear Minister

I have the honour to present to you for tabling in the Northern Territory Parliament the Annual Report of the Council of Charles Darwin University for the year ended 31 December 2024, furnished in accordance with the reporting provisions of the *Charles Darwin University Act 2003*.



The Hon Paul Henderson AO

Chancellor
30 June 2025

The Charles Darwin University (CDU) Annual Report 2024 is produced in two volumes. Volume 1, "2024 year in review" contains statutory reports. Volume 2, "2024 financial statements" contains the financial statements of CDU, and its related entities.

CDU Annual Reports and Financial Statements can be found at
W: cdu.edu.au/media-communications/publications

Produced by Marketing, Media and Communications

Design by Floodlight Creative

Printed by UniPrint, CDU

© Charles Darwin University 2025

ISBN: 978-0-646-71587-2

CRICOS Provider No: 00300K

TEQSA Provider ID PRV12069

RTO Provider No: 0373

ABN: 54 093 513 649

Contact: media@cdu.edu.au

+61 8 8946 7798



Acknowledgement of Country and recognition of Australian First Nations traditional owners and cultures

Charles Darwin University acknowledges and respects the many Australian First Nations traditional custodians of the land upon which our campuses and centres are located.

We acknowledge and pay our respect to the Larrakia who are the traditional custodians of the land upon which our Darwin, Casuarina, Waterfront and Palmerston campuses are located.

We acknowledge and pay respect to the Arrernte who are the traditional custodians of the lands upon which our Alice Springs campus is located.

We acknowledge and pay our respect to the Jawoyn, Wardaman and Dagomon who are the traditional custodians of the lands upon which our Katherine campuses are located.

We acknowledge and pay our respect to the Gadigal who are the traditional custodians of the lands upon which our Sydney campus is located.

We acknowledge and pay our respect to the Turrbal and Yuggera who are the traditional custodians of the lands upon which our Brisbane centre is located.

We acknowledge and pay our respect to the Woiworong who are the traditional custodians of the lands upon which our Tennant Creek centre is located.

We acknowledge and pay our respect to the Yolŋu who are the traditional custodians of the lands upon which our Nhulunbuy centre is located.

We also acknowledge and pay our respect to the Mirrar (Jabiru), the Kungarakana and Warrai (Batchelor and Adelaide River), the Anindilyakwa (Groote Eylandt) and the Tiwi (Tiwi Islands) people.

We acknowledge Australian First Nations peoples' long tradition of sustaining their communities and environments over thousands of years. They are the first educators and first innovators.

They are the holders of knowledge that makes an important contribution to the improvement of our local, national and global communities.

We extend our respect to Elders – past, present and emerging – and to all First Nations people.



Contents

Message from the Chancellor	01
Message from the Vice-Chancellor and President	02
2024 highlights	03
KPIs	05
2024 Key Statistics	07
Our structure	
Corporate Governance	22
Council Members	
Meetings of Committees	
Principal Officers	
Awards and Achievements	28
Vice-Chancellor's Teaching and Learning Awards	
2024 CDU Alumni Awards highlights	
Review of activities	30
Goal 1 – Regional and Remote Opportunities	
Goal 2 – Be the most recognised university for Australian First Nations training, education and research	
Goal 3 – Advance our research capacity and capability to deliver reach and impact	
Goal 4 – Grow our reach and impact across the Northern Territory, Australia and beyond	
Goal 5 – Prioritise environmental and organisational sustainability	
Goal 6 – Create a student experience where every student can connect and succeed	
Goal 7 – Be an employer of choice where people feel supported and happy	
Summary of financial information	41
Honorary awards roll	48
Our campuses and centres	50



Message from the Chancellor

Charles Darwin University stands as a pillar of education and training across northern Australia.

Every time I speak with members of our community, I'm reminded of the important work carried out by CDU alumni, staff, students, and researchers - not only here in the Northern Territory but across the country and beyond.

Through CDU, the people of the NT and our northern neighbours have access to world-class education and research, right on their doorstep.

This vital role was reinforced for me during the opening of the Danala | Education and Community Precinct in the heart of Darwin last October. Thousands of people joined us to witness firsthand how education is being delivered today - and how it's evolving for the future.

The campus is a magnificent, striking addition to Darwin's skyline, but more importantly, it has been purposefully designed to foster outstanding teaching and learning. Its classrooms, study spaces, and community areas are built to provide students with a high-quality, modern educational experience.

Already, the campus has made a positive impact on Darwin's CBD, increasing day-to-day business activity and attracting investment in new student accommodation. Each time I visit or pass by, the open spaces feel more and more like a town square - a true gathering place for students, locals, and visitors alike.

Another of CDU's great success stories this year has been in research. Research is the foundation of any university's reputation, and at CDU that foundation

is strong. It's a place where two knowledges come together, and I'm especially proud to see this reflected in the First Nations partnerships we've built and strengthened throughout the year.

CDU remains a university that strives to create opportunities for students, regardless of background or circumstance - a mission that continues to define and inspire its work.

On a personal note, this will be my final letter introducing CDU's Annual Report. It has been a genuine honour to serve as Chancellor of the Territory's university for the past six years. I am confident the University's governance and future are in good hands with Trevor Riley AO.

A university is a place where students' aspirations are nurtured, where bold ideas are born, and where futures are shaped. The journey is not without its twists and turns, but that's what makes it so rewarding to be part of it.

Thank you to everyone for your support throughout my time as Chancellor, and for your unwavering commitment to CDU.

The Hon Paul Henderson AO KC
Chancellor



Message from the Vice-Chancellor and President

This year has been both challenging and rewarding for our University. I am continually inspired by the resilience, innovation, and ambition our people have shown. While more challenges lie ahead, I am confident we will navigate them together and emerge stronger than ever.

One of the most significant hurdles we faced was the impact of changes to Australia's migration policy, which made it more difficult to attract new international students to CDU.

I was vocal in raising our concerns, taking them directly to Canberra. While some positive adjustments have been made, there's still work to do to remove the uncertainty these policies have created.

Yet, alongside the challenges, we've had much to celebrate.

The opening of the Danala | Education and Community Precinct places CDU at the heart of Darwin and marks a major milestone in our history. Developed by Territorians, for Territorians, this precinct will not only offer students access to the education they deserve, but will also keep the University closely connected to the community we are proud to serve. We also celebrated the opening of the Mathaman | Nhulunbuy Campus, restoring a permanent base for tertiary education in that region.

Another landmark achievement was securing approval for the Northern Territory's first homegrown School of Medicine. With Commonwealth-funded places, we'll be training GPs right here in the NT - and research shows doctors who train locally are more likely to stay

and practice locally. We look forward to welcoming our first cohort of medical students to the Casuarina campus in 2026.

This year also saw CDU hold its first-ever graduation ceremony in Katherine - a proud moment for our University and the local community.

In research, CDU has long been a university that punches above its weight, and that was never more evident than in 2024. Total enrolments for Higher Degree by Research (HDR) students expanded to 417, with the number of international HDR students increasing to 118. Our researchers and the professional staff at the Office of Research and Innovation have worked tirelessly to secure ongoing opportunities for research in the Northern Territory. The support from our stakeholders is a clear endorsement of the quality of our research and CDU's standing as a trusted and credible institution.

With continuous improvements in research, facilities, and academic quality throughout the year, we are well-positioned for a strong and exciting future. I look forward to seeing where the future takes us.

Yours sincerely,

Professor Scott Bowman AO
Vice-Chancellor and President

2024 highlights



Danala | Education and Community Precinct opens

After more than five years of planning and construction, CDU's newest campus opened in the heart of Darwin in late 2024. The state-of-the-art facility features 20 classrooms, eight computer labs, two cyber labs, several seminar rooms, and a moot court. It is also the new home of Library & Archives NT and the CDU library.

Medical school accreditation

In November, the Australian Medical Council granted CDU six years of accreditation for its new medical degree, following the Federal Government's approval of Commonwealth-supported places. The first student intake is set for 2026.

New Chancellor announced

Former NT Supreme Court Chief Justice Trevor Riley AO KC was named CDU's fifth Chancellor in December, taking over the role in July 2025. Mr Riley's longstanding connection with CDU started in 1991 as a part-time law lecturer, culminating in his appointment as a University Professorial Fellow in 2016.

New HR platform

The Digital Technology Solutions team rolled out OneHR & Pay, modernising CDU's HR systems through automation and integrated business intelligence tools.

First graduation ceremony at Katherine campus

In May, the Katherine Rural Campus hosted its inaugural graduation ceremony. Eleven students attended to receive their qualifications, joining almost 200 graduates from the Big Rivers region.

Hydrogen produced in the NT for the first time

CDU's Renewable Energy Microgrid Hub for Applied Research and Training (REMHART) produced hydrogen in the NT for the first time, following the installation of a containerised hydrogen electrolyser and fuel cell system. The facility will support workforce training and progress the development of a local hydrogen industry.

New campus opens in East Arnhem

In September, CDU opened the Mathaman | CDU Nhulunbuy campus that restores a permanent tertiary education presence in the region. The campus will improve local access to higher education and expand training opportunities in remote communities.

Sydney campus celebrates 10 years

CDU's Sydney campus marked its 10th anniversary in March with a celebration attended by 120 guests, including Sydney Lord Mayor Clover Moore. As part of the milestone event, CDU officially opened a newly completed floor, expanding the campus's teaching and learning spaces to support its growing student community.

CDU partners with NT Correctional Services

A new \$1.7 million partnership between CDU and NT Correctional Service has engaged CDU TAFE to deliver vocational training courses in NT correctional centres. Programs include vocational qualifications, literacy, and numeracy training.

Territory FM gets upgrade

After 40 years, CDU's 104.1 Territory FM upgraded to new state-of-the-art studios. Located at the Education and Community Precinct (ECP), the premises includes three fully digital Wheatstone studios, new broadcast microphones, and electric sit-stand desks.

International leadership for CDU Vice-Chancellor

CDU Vice-Chancellor and President Scott Bowman was appointed Executive Chair of the Alliance of Guangzhou International Sister-City Universities (GISU), helping to foster international collaboration and drive sustainable development initiatives.

Student accommodation announced

CDU received land from the NT Government to build new, purpose-built student accommodation in central Darwin. Campus Living Villages will deliver a 350-bed facility at 56 Woods Street, Darwin, adjacent to the Education and Community Precinct.

Katherine trades training centre funded

CDU TAFE secured \$2.5 million in federal funding toward a new \$3.5 million Technical Trades Training Centre at the Katherine Rural Campus. CDU will contribute an additional \$1 million. The centre will deliver specialist training in building and construction, engineering, electrotechnology, plumbing, automotive and aviation.

Record graduation in Sydney

CDU's Sydney campus broke its graduation record in October, awarding qualification to more than 400 students - triple the number from three years ago.

Student bus service launched

To improve student safety and access, CDU introduced a free bus service linking Casuarina, Palmerston and the Darwin campuses, as well as student accommodation in Casuarina. The service operates during the semester periods.

Key appointments

Professor Maneka Jayasinghe was appointed as Dean of Business and Accounting.

Mark Cartwright was appointed as Director Risk and Assurance.

Professor Raelke Grimmer was appointed as Dean of Education, Enabling and Linguistics.

Leia Grimsey was appointed as Northern Hub – Director.

Bryce Dorrian was appointed as Director Finance.

Professor Louise King was appointed as Deputy Provost.

Rebecca Marrone was appointed as Director Office of the Vice-Chancellor.

Professor Fiona Coulson was appointed as Provost.

Charles Darwin University

STRATEGIC PLAN 2021-2026

Key Performance Indicators

We will measure our success by meeting the following targets:

Category	No.	Strategic KPI	Baseline	2024	2024 Difference Target v Actual
Volume and Reach	1.1	Increase in the proportion of Northern Territory residents who enrol to study with CDU each year	7.4%	Target 8.1% Actual 7.0%	▼ -1.1%
	1.2	Increase in domestic student enrolments	26,962	Target 26,742 Actual 24,340	▼ -2,402
Student Experience	2.1	Improvement in Student Net Promoter Score	5.27	Target 13 Actual 28.6	▲ 15.6
First Nations	3.1	Improvement in unit success rate for First Nations Degree & Higher Degree by Research Education Students	61%	Target 69% Actual 63.5%	▼ -5.5%
	3.2	Improvement in unit success rate for First Nations VET students	83.1%	Target 85% Actual 85%	— 0%
Research Quality and Impact	4.1	Growth in annual Higher Education Research Development Collection (HERDC) income	\$17.9 million	Target \$29.4m Actual \$29.8m	▲ \$0.4 million
	4.2	Improvement in Q1 or equivalent research publications	408	Target 738 Actual 645	▼ -93
Partnerships and Reputation	5.1	Improvement in Times Higher Education Reputation Index	3.3	Target 16 Actual 21.8	▲ 5.8
Organisational Sustainability	6.1	Improvement in Your Voice Staff Survey employee NPS	-24	Target 18 Actual NA	NA
	6.2	Net surplus	Break even	Target 2.5% Actual 0.69%	▼ -1.81%



2024 Key Statistics

Student numbers¹



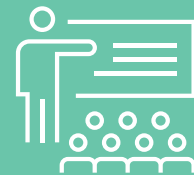
21,716

total number of students in 2024



28,535

total course enrolments



11,578

total Equivalent Full-time Student Load (EFTSL)

12,846

Degree & Research student headcount

13,266

Degree & Research course enrolments

8,102

Degree & Research EFTSL

8,870

CDU TAFE student headcount

15,269

CDU TAFE course enrolments

3,476

CDU TAFE EFTSL

¹ Students with an enrolment in both Higher Education and Vocational Education and Training (VET) in the reporting year are counted once in each sector. 2023 figures reported this year may vary from those reported in the 2023 annual report, due to late reconciliation adjustments which occurred after the 2023 publication of the key statistics; and changes to data standards applied in 2024 and reflected retrospectively to historical data for reporting comparison.

	Category	2023	2024	% Change 2023–2024
Delivery Locations²	CDU Campuses & Centres	11	9	
	Other Urban Delivery Locations	8	10	
	Other Regional and Remote Delivery Locations	95	98	
	Other Interstate Delivery Locations	6	1	
	Other Overseas Delivery Locations	2	1	

Course Profile^{1,3}	Certificates	127	123	
	Diplomas (VET / HE), Associate Degrees, UG Certificates, and Enabling	54	54	
	Undergraduate Coursework	52	53	
	Postgraduate Coursework	86	80	
	Postgraduate Research	2	2	
	Non-Award Short Course	97	88	

Student Equity & Diversity - CDU Students Overall	% Domestic	86.6%	85.3%	-1.3%
	% International	13.4%	14.7%	1.3%
	# International Student Home Countries	79	80	
	% of International Students from Asian Countries	83.2%	81.4%	
	% First Nations Australians	16.7%	17.0%	0.3%
	% 25 years of age and older	67.4%	66.6%	-0.8%
	% Female	52.7%	51.0%	-1.7%
	% Non-Binary	0.2%	0.1%	0.0%
	% Male	47.1%	48.9%	1.7%
	% Low Socio-economic	13.8%	13.8%	-0.1%
	% Regional or Remote Home Location	65.9%	65.3%	-0.5%
	% Non-English Speaking Background	23.9%	23.9%	0.0%
% Disability ⁴	7.7%	8.1%	0.4%	

Student Equity & Diversity - By Sector	Degree & Research Education			
	% Domestic	73.0%	71.4%	-1.6%
	% International	27.0%	28.6%	1.6%
	% First Nations Australians	6.3%	6.5%	0.2%
	% 25 years of age and older	72.8%	72.4%	-0.4%
	% Female	65.0%	64.8%	-0.3%
	% Non-Binary	0.2%	0.1%	0.0%
	% Male	34.8%	35.1%	0.3%
	% Low Socio-economic	10.4%	10.9%	0.4%
	% Regional or Remote Home Location	45.3%	41.5%	-3.8%
	% Non-English Speaking Background	24.0%	24.4%	0.3%
	% Disability	9.1%	9.7%	0.6%

² Locations where a Degree, Research or Vocational Unit of study was delivered in the academic year. CDU Campuses and Centres are CDU owned or leased premises where training is delivered.

Other locations are places where training and learning is delivered outside of a CDU Campus or CDU Centre - for example delivery of VET training on a Rural Station in the Northern Territory.

³ Course profile in a year includes any CDU course with reported student enrolments under the Higher Education or Vocational Education and Training reporting guidelines in a given year.

⁴ 2023 Disability percentage for CDU Overall was mis-printed in 2023 Annual report.

	Category	2023	2024	% Change 2023–2024
Student Equity & Diversity - By Sector	CDU TAFE			
	% Domestic	97.8%	97.3%	-0.5%
	% International	2.2%	2.7%	0.5%
	% First Nations Australians	25.2%	26.1%	0.8%
	% 25 years of age and older	63.0%	61.5%	-1.5%
	% Female	42.6%	39.0%	-3.6%
	% Non-Binary	0.2%	0.2%	0.0%
	% Male	57.2%	60.8%	3.6%
	% Low Socio-economic	16.6%	16.3%	-0.3%
	% Regional or Remote Home Location	84.8%	86.1%	1.2%
	% Non-English Speaking Background	23.8%	23.5%	-0.3%
% Disability	6.5%	6.7%	0.2%	
Research⁵	Research income (\$'000), all categories	84,357	89,544	6.1%
	Higher Degree by Research EFTSL	261.5	323.0	23.5%
	Higher Degree by Research completions (all)	50	53	6.0%
Staff (Full Time Equivalent)	Total	1499	1481	-1.2%
	% Female	63%	62%	
	Academic	606	635	4.8%
	% Female	54%	54%	
	Professional	893	846	-5.3%
% Female	68%	68%		
Financial	Total revenue (consolidated), \$'000	385,415	425,038	10%
	Total expenses (consolidated), \$'000	403,950	422,120	4%
	Total equity, \$'000	674,603	663,466	(1.6%)

⁵ 2022 research income figures differ from those published in the 2022 Annual Report, due to changes to the figures after the annual report was published in 2022. Total Research income includes Research Income reported in the Higher Education Research Data Collection (HERDC) and additional research income funded via Research Block Grants. 2023 HERDC research income and completion figures are pre-audit/submission and may vary slightly once audited/submitted. Audit/submission occurs after the publication of the annual report. Post audit and submission figures for 2023 will be reflected in the 2024 Annual Report.

2024 Degree Education and Research Student Statistics

Category	2023	2024	% Change 2023–2024	% Change over 5 years
Student Headcount	13,033	12,846	-1.4%	6.4%
Course Enrolments	13,465	13,266	-1.5%	7.5%
Equivalent Full-time Student Load (EFTSL)	7,694	8,102	5.3%	21.2%
Commencing Student Headcount	5,394	5,224	-3.2%	8.6%
Commencing Course Enrolments	5,612	5,422	-3.4%	10.0%
Commencing EFTSL	3,062	3,146	2.8%	23.6%
(All elements below represented as Course Enrolments)				
Student Type⁶				
Domestic	9,836	9,478	-3.6%	-8.7%
International	3,632	3,789	4.3%	93.0%
Funding Source⁷				
Commonwealth Supported	9,216	8,838	-4.1%	-11.9%
Domestic Fee Paying (coursework)	348	335	-3.7%	219.0%
Domestic Higher Degree by Research	302	356	17.9%	41.8%
International (coursework)	3,536	3,669	3.8%	92.8%
International Higher Degree by Research	63	78	23.8%	39.3%
Other	4	0	-100.0%	
Course Level				
Enabling	1,108	1,201	8.4%	-10.8%
Undergraduate	8,340	7,711	-7.5%	-11.6%
Postgraduate Coursework	3,511	3,847	9.6%	99.4%
Higher Degree by Research	365	434	18.9%	41.4%
Non-Award	141	73	-48.2%	87.2%
Study Load				
Full-time	7,383	7,538	2.1%	28.5%
Part-time	6,082	5,728	-5.8%	-11.6%
% Part-time	45%	43%		
Course Attendance Mode				
External / Online	6,499	6,614	1.8%	-4.6%
Mixed Mode	3,185	3,636	14.2%	37.4%
Internal	3,781	3,016	-20.2%	9.2%
% External / Online	48%	50%		

6 Students can change from International to Domestic student type mid way through a year and therefore the sum of enrolments across student type exceeds the total course enrolments reported.

7 Students can change funding source during a year and therefore the sum of enrolments across funding sources exceeds the total course enrolments reported.

Category	2023	2024	% Change 2023–2024	% Change over 5 years
Course Location				
Online ⁸	6,960	7,338	5.4%	-8.5%
Casuarina	4,854	3,738	-23.0%	10.2%
Darwin Waterfront	1,094	1,412	29.1%	118.2%
Alice Springs	35	22	-37.1%	-43.6%
Katherine	5	0	-100.0%	
Sydney	512	753	47.1%	829.6%
Perth	1	0	-100.0%	
Brisbane	4	3	-25.0%	
Unit Delivery Location (EFTSL)				
Online Studies	4,157.0	4,345.1	4.5%	10.2%
Casuarina Campus	2,479.9	2,603.4	5.0%	20.7%
Darwin Waterfront Campus & Danala	659.7	575.6	-12.7%	30.6%
Alice Springs Campus	20.0	10.9	-45.5%	70.3%
Katherine Town Campus	3.6	1.8	-50.0%	
CDU Sydney	372.8	564.6	51.4%	1283.8%
CDU Perth	0.0	0.0		
Overseas	1.1	1.0	-9.1%	-37.5%
Number of Delivery locations	8	8		
Field of Study (Broad FOE)				
Health	4,330	3,996	-7.7%	-3.4%
Society and Culture	2,419	2,237	-7.5%	-4.3%
Education	1,776	1,903	7.2%	6.7%
Information Technology	1,152	1,334	15.8%	248.3%
Management and Commerce	1,129	1,024	-9.3%	-3.6%
Mixed Field Programs	1,069	1,186	10.9%	-11.2%
Engineering and Related Technologies	836	893	6.8%	59.2%
Agriculture, Environmental and Related Studies	281	281	0.0%	9.3%
Natural and Physical Sciences	259	273	5.4%	32.5%
Miscellaneous	202	124	-38.6%	12.7%
Creative Arts	8	12	50.0%	-89.7%
Architecture and Building	4	3	-25.0%	-94.3%

⁸ Course Attendance Mode is External or Course Location is External.

Category	2023	2024	% Change 2023–2024	% Change over 5 years
----------	------	------	-----------------------	--------------------------

Student Enrolment Diversity - All Students				
Domestic	9,836	9,478	-3.6%	-8.7%
International	3,632	3,789	4.3%	93.0%
First Nations Australians ⁹	847	857	1.2%	4.0%
25 years of age and older	9,796	9,601	-2.0%	4.1%
Female	8,753	8,590	-1.9%	0.0%
Non-Binary	21	17	-19.0%	183.3%
Male	4,691	4,659	-0.7%	24.2%
Low Socio-Economic ⁹	1,403	1,440	2.6%	-3.4%
Regional or Remote Home Location ^{9,10}	5,763	5,499	-4.6%	-17.2%
Non-English Speaking Background	3,238	3,233	-0.2%	40.9%
Disability	1,227	1,293	5.4%	62.0%

% Student Enrolment Diversity - All Students				
% Domestic	73.0%	71.4%	-1.6%	-12.7%
% International	27.0%	28.6%	1.6%	12.7%
% First Nations Australians ⁹	6.3%	6.5%	0.2%	-0.2%
% 25 years of age and older	72.8%	72.4%	-0.4%	-2.3%
% Female	65.0%	64.8%	-0.3%	-4.8%
% Non-Binary	0.2%	0.1%	0.0%	0.1%
% Male	34.8%	35.1%	0.3%	4.7%
% Low Socio-economic ⁹	10.4%	10.9%	0.4%	-1.2%
% Regional or Remote Home Location ^{9,10}	45.3%	41.5%	-3.8%	-12.3%
% Non-English Speaking Background	24.0%	24.4%	0.3%	5.8%
% Disability	9.1%	9.7%	0.6%	3.3%

Domestic Equity Cohort Participation Rates ¹¹				
% First Nations Australians	7.2%	7.4%	0.2%	0.1%
% Low Socio-economic	14.1%	14.8%	0.7%	0.6%
% Regional or Remote Home Location ¹⁰	58.8%	57.3%	-1.5%	-8.0%
% Non-English Speaking Background	5.4%	5.1%	-0.3%	-3.0%
% Disability	11.2%	11.9%	0.7%	4.9%

Domestic Equity Cohort Access Rates ¹²				
% First Nations Australians	9.2%	8.5%	-0.7%	-1.0%
% Low Socio-economic	14.5%	15.5%	1.0%	0.9%
% Regional or Remote Home Location ¹⁰	62.4%	54.3%	-8.1%	-11.1%
% Non-English Speaking Background	6.2%	5.5%	-0.7%	-2.1%
% Disability	13.0%	11.7%	-1.3%	4.2%

⁹ First Nations status, Low Socio-economic status, and Home location remoteness is only reported for Domestic students. International student are excluded from these categorisations.

¹⁰ New ABS data standard for ASGS Remoteness Categories and ASES Socio-economic Statuses applied from 2023 onwards.

¹¹ Participation Rates only calculated for domestic students and is EFTSL from all domestic students in the equity cohort, divided by the EFTSL from all domestic students.

¹² Access Rates only calculated for domestic students and is EFTSL from all commencing domestic students in the equity cohort, divided by the EFTSL from all commencing domestic students.

Category	2023	2024	% Change 2023–2024	% Change over 5 years
Student Permanent Home Location				
Northern Territory	3,948	3,782	-4.2%	-15.5%
Rest of Australia	6,217	6,105	-1.8%	4.5%
Overseas	3,297	3,378	2.5%	68.5%
Unknown	3	1	-66.7%	-94.7%
International				
Total	3,632	3,789	4.3%	93.0%
Commencing	2,381	1,566	-34.2%	110.2%
International as % of Total Enrolments	27.0%	28.6%	1.6%	12.7%
Top 10 Countries of Origin for International Students				
Nepal	990	960	-3.0%	131.9%
India	739	686	-7.2%	66.1%
Bangladesh	430	599	39.3%	330.9%
China (excludes Special Administrative Regions and Taiwan)	260	239	-8.1%	-11.2%
Pakistan	200	181	-9.5%	182.8%
Vietnam	166	177	6.6%	56.6%
Sri Lanka	91	98	7.7%	88.5%
Philippines	73	68	-6.8%	-24.4%
Nigeria	35	41	17.1%	24.2%
Indonesia	42	37	-11.9%	-14.0%
Top 10 Countries of Origin % of Total International Course Enrolments				
% Nepal	27.3%	25.3%	-1.9%	-4.2%
% India	20.3%	18.1%	-2.2%	2.9%
% Bangladesh	11.8%	15.8%	4.0%	-8.7%
% China (excludes Special Administrative Regions and Taiwan)	7.2%	6.3%	-0.9%	7.4%
% Pakistan	5.5%	4.8%	-0.7%	-1.5%
% Vietnam	4.6%	4.7%	0.1%	1.1%
% Sri Lanka	2.5%	2.6%	0.1%	0.1%
% Philippines	2.0%	1.8%	-0.2%	2.8%
% Nigeria	1.0%	1.1%	0.1%	0.6%
% Indonesia	1.2%	1.0%	-0.2%	1.2%
Total Number of Countries of Origin for International Students				
	69	71	2.9%	0.0%
Graduate Outcomes¹³				
% Graduates in Employment 4 months after graduation	81.2%	81.6%	0.4%	5.7%
% Graduates in Further Study 4 months after graduation	13.8%	11.1%	-2.7%	0.5%
Graduate Satisfaction	69.4%	70.2%	0.8%	-7.3%

¹³ Graduate Outcomes are taken from the Graduate Outcomes Survey (GOS) administered under the Commonwealth Government's Quality Indicators of Learning and Teaching (QILT).

2024 Vocational Education & Training Student Statistics

Category	2023	2024	% Change 2023–2024	% Change over 5 years
Student Headcount	9,305	8,870	-4.7%	3.2%
Course Enrolments	16,369	15,269	-6.7%	4.3%
Achieved Actual Hours Curriculum (AHC) ¹⁴	2,636,613	2,502,745	-5.1%	6.8%
Equivalent Full-time Student Load (EFTSL) ¹⁵	3,662.0	3,476.0	-5.1%	6.8%
Commencing Student Headcount	7,405	6,744	-8.9%	0.5%
Commencing Course Enrolments	12,670	11,107	-12.3%	-0.2%
Commencing AHC ¹⁴	1,912,157	1,705,304	-10.8%	3.0%
Commencing EFTSL ¹⁵	2,656.0	2,368.0	-10.8%	3.0%

(Unless otherwise reported all elements below represented as **Course Enrolments**)

Student Type ¹⁶				
VET in Schools	1403	1217	-13.3%	-24.8%
Apprentice / Trainee	3915	4104	4.8%	23.1%
NTG Subsidised Other ¹⁷	8998	9003	0.1%	18.1%
International	357	407	14.0%	46.9%
Other ¹⁸	1736	1948	12.2%	110.8%

Course Level ^{16,19}				
Certificate I - III	4758	4909	3.2%	-21.1%
Certificate IV	1550	1240	-20.0%	6.8%
Diploma	390	352	-9.7%	0.9%
Short Course / Non-Award	4402	3769		
Learner Support	5269	4999	-5.1%	18.4%

Part-time or Full-time ²⁰				
Full-time	2,947	2,887	-2.0%	8.7%
Part-time	13,422	12,382	-7.7%	3.3%
% Part-time	82%	81%		

Attendance Mode (Units) ¹⁶				
External / Online	1263	1051	-16.8%	7.2%
Internal/On Campus	14,825	14,092	-4.9%	6.7%
Workplace	1,787	1,322	-26.0%	77.0%
RPL	888	586	-34.0%	-31.5%

14 Achieved AHC calculation updated from 2024 to apply 85% weighting for partial complete grade outcomes to only NTG funded units; units with partial grade outcomes in all other fundings sources are included at 100%.

15 EFTSL = 720 AHC

16 Metric is based on a unit level attribute and a student can have multiple unit level attributes within a course enrolment. Therefore the sum of course enrolments in this section exceed the total Course enrolments

17 NTG Subsidised Other- Student Type includes students enrolled where part/all of the cost of training is offset by an Northern Territory Government contracted subsidy, other than VET in Schools and Apprentices and Trainees.

18 Other Student Types includes all other enrolments not reported in the above student types.

19 Learner Support Enrolments have been removed from associated course level, and therefore 2023 course level enrolment counts published this year will vary from those reported in the 2023 annual report.

20 Part-time if student is enrolled in 540 AHC of Funded Enrolled AHC with an activity start date in the reporting year. This was previously reported at a course enrolment level (ie a student with 2 x course enrolments of 300 AHC each = 600 total AHC would have previously been reported as part time and is now reported as full-time in the year).

Category	2023	2024	% Change 2023–2024	% Change over 5 years
Top 10 Unit Delivery Locations (Achieved AHC)²⁴				
Casuarina Campus	1,055,149	934,597	-11.4%	-13.8%
Alice Springs Campus	386,137	325,055	-15.8%	8.9%
Palmerston Campus	333,298	436,627	31.0%	56.8%
CDU Waterfront Darwin & Danala	256,783	136,854	-46.7%	27.4%
Nhulunbuy (Gove)	45,420	65,402	44.0%	163.9%
Katherine (Rural College)	41187	62213	51.1%	101.0%
Yulara	27,470	25,622	-6.7%	-32.4%
Darwin Correctional Centre	2504	10479	318.5%	
External / Online	25,716	78,667	205.9%	66.2%
Alice Springs Correctional Centre		11,737		
Total Number of Delivery Locations	116	120	3.4%	0.0%
Unit Delivery Remoteness²¹ (Achieved AHC)²⁴				
Urban	2,168,189	2,046,031	-5.6%	6.9%
Regional	40,199	23,026	-42.7%	5.2%
Remote	412,509	421,136	2.1%	5.8%
Interstate	15,716	12,552	-20.1%	317.0%
% of Total AHC delivered in Remote / Very Remote Locations	15.6%	16.8%	1.2%	-0.2%
Field of Study (Broad FOE)				
Mixed Field Programmes	5309	5021	-5.4%	6.2%
Engineering and Related Technologies	2671	2522	-5.6%	-11.4%
Agriculture, Environmental and Related Studies	2534	2530	-0.2%	106.7%
Management and Commerce	1936	1426	-26.3%	-11.3%
Food, Hospitality and Personal Services	1309	1040	-20.6%	8.3%
Society and Culture	576	517	-10.2%	-43.1%
Architecture and Building	539	523	-3.0%	-32.0%
Education	517	569	10.1%	157.5%
Health	463	424	-8.4%	-56.5%
Creative Arts	294	208	-29.3%	-24.6%
Information Technology	220	216	-1.8%	75.6%
Natural and Physical Sciences	1	2	0.0%	0.0%
Other	0	271		

²¹ Based on the delivery location of unit training and remoteness categories based on the NT Government remoteness loading categories- this is different to the Australian Geographical standards for categorising remoteness areas.

2024 Key Statistics

Category	2023	2024	% Change 2023–2024	% Change over 5 years
Industry Group				
General Education and Training	5,429	5,135	-5.4%	8.5%
Primary Industry	2,544	2,572	1.1%	96.2%
Business and Clerical	1,375	1,008	-26.7%	8.5%
Tourism and Hospitality	1,199	996	-16.9%	26.6%
Utilities	827	894	8.1%	33.8%
Community Services, Health and Education	873	827	-5.3%	-26.0%
Building and Construction	663	739	11.5%	-21.5%
Automotive	645	671	4.0%	10.7%
Engineering and Mining	668	613	-8.2%	-52.4%
Arts, Entertainment, Sports and Recreation	536	421	-21.5%	-29.8%
Sales and Personal Service	431	412	-4.4%	-3.1%
Transport and Storage	516	397	-23.1%	-36.7%
Computing	189	216	14.3%	75.6%
Food Processing	237	211	-11.0%	-10.2%
Finance, Banking and Insurance	133	92	-30.8%	-10.7%
Cookery	69	64	-7.2%	-55.9%
Science, Technical and Other	31	1	-96.8%	
Process Manufacturing	4	0	-100.0%	-100.0%
Student Diversity and Equity				
Domestic	16,012	14,862	-7.2%	3.5%
International	357	407	14.0%	46.9%
First Nations Australians	4,133	3,982	-3.7%	1.1%
25 years of age and older	10,305	9,391	-8.9%	5.8%
Female	6,975	5,962	-14.5%	6.8%
Non-Binary	26	24		
Male	9,368	9,282	-0.9%	2.5%
Low SES	2,719	2,488	-8.5%	-4.6%
Regional Home Location	6,921	7,249	4.7%	5.4%
Remote / Very Remote Home Location	6,965	5,891	-15.4%	-1.0%
Non-English Speaking Background	3,891	3,582	-7.9%	1.2%
Disability/ies	1,070	1,022	-4.5%	33.9%

Category	2023	2024	% Change 2023–2024	% Change over 5 years
% Student Diversity and Equity				
% Domestic	97.8%	97.3%	-0.5%	-0.8%
% International	2.2%	2.7%	0.5%	0.8%
% First Nations Australians	25.2%	26.1%	0.8%	-0.8%
% 25 years of age and older	63.0%	61.5%	-1.5%	0.9%
% Female	42.6%	39.0%	-3.6%	0.9%
% Non-Binary	0.2%	0.2%	0.0%	0.2%
% Male	57.2%	60.8%	3.6%	-1.0%
% Low SES	16.6%	16.3%	-0.3%	-1.5%
% Regional Home Location	42.3%	47.5%	5.2%	0.5%
% Remote / Very Remote Home Location	42.5%	38.6%	-4.0%	-2.1%
% Non-English Speaking Background	23.8%	23.5%	-0.3%	-0.7%
% Disability/ies	6.5%	6.7%	0.2%	1.5%
Student Home Location				
Northern Territory ²²	13,747	12,900	-6.2%	1.2%
Rest of Australia ²²	289	468	61.9%	108.9%
Overseas	377	411	9.0%	46.3%
Unknown	1,956	1,490	-23.8%	7.7%
International				
Total	357	407	14.0%	46.9%
Commencing	338	327	-3.3%	38.6%
International as % of Total Enrolments	2.2%	2.7%	0.5%	0.8%
Top 10 Countries of Origin in 2024				
Samoa	34	60	76.5%	650.0%
China (excludes SARs and Taiwan)	60	54	-10.0%	170.0%
Indonesia	46	44	-4.3%	18.9%
Fiji	36	31	-13.9%	675.0%
Philippines	25	26	4.0%	23.8%
Nepal	19	24	26.3%	2300.0%
India	17	17	0.0%	750.0%
England	6	14	133.3%	
Timor-Leste	9	14	55.6%	-82.9%
Taiwan	10	11	10.0%	-63.3%

²² Graduate outcomes (Employment and satisfaction taken from the Student Outcomes Survey (SOS).

2024 Key Statistics

Category	2023	2024	% Change 2023–2024	% Change over 5 years
Top 10 Countries of Origin in 2024 % of Total International Course Enrolments				
% Samoa	9.5%	14.7%	5.2%	11.9%
% China (excludes SARs and Taiwan)	16.8%	13.3%	-3.5%	6.0%
% Indonesia	12.9%	10.8%	-2.1%	-2.5%
% Fiji	10.1%	7.6%	-2.5%	6.2%
% Philippines	7.0%	6.4%	-0.6%	-1.2%
% Nepal	5.3%	5.9%	0.6%	5.5%
% India	4.8%	4.2%	-0.6%	3.5%
% England	1.7%	3.4%	1.8%	3.4%
% Timor-Leste	2.5%	3.4%	0.9%	-26.2%
% Taiwan	2.8%	2.7%	-0.1%	-8.1%
<hr/>				
Total Number of Countries of Origin for International Students	45	44		
<hr/>				
Graduate Outcomes²³				
% Graduates in Employment 4 months after graduation	84.0%	80.0%	-4.0%	
Graduate Satisfaction	94.1%	94.5%	0.4%	

²³ Graduate outcomes (Employment and satisfaction taken from the Student Outcomes Survey (SOS).

2024 Higher Degree by Research

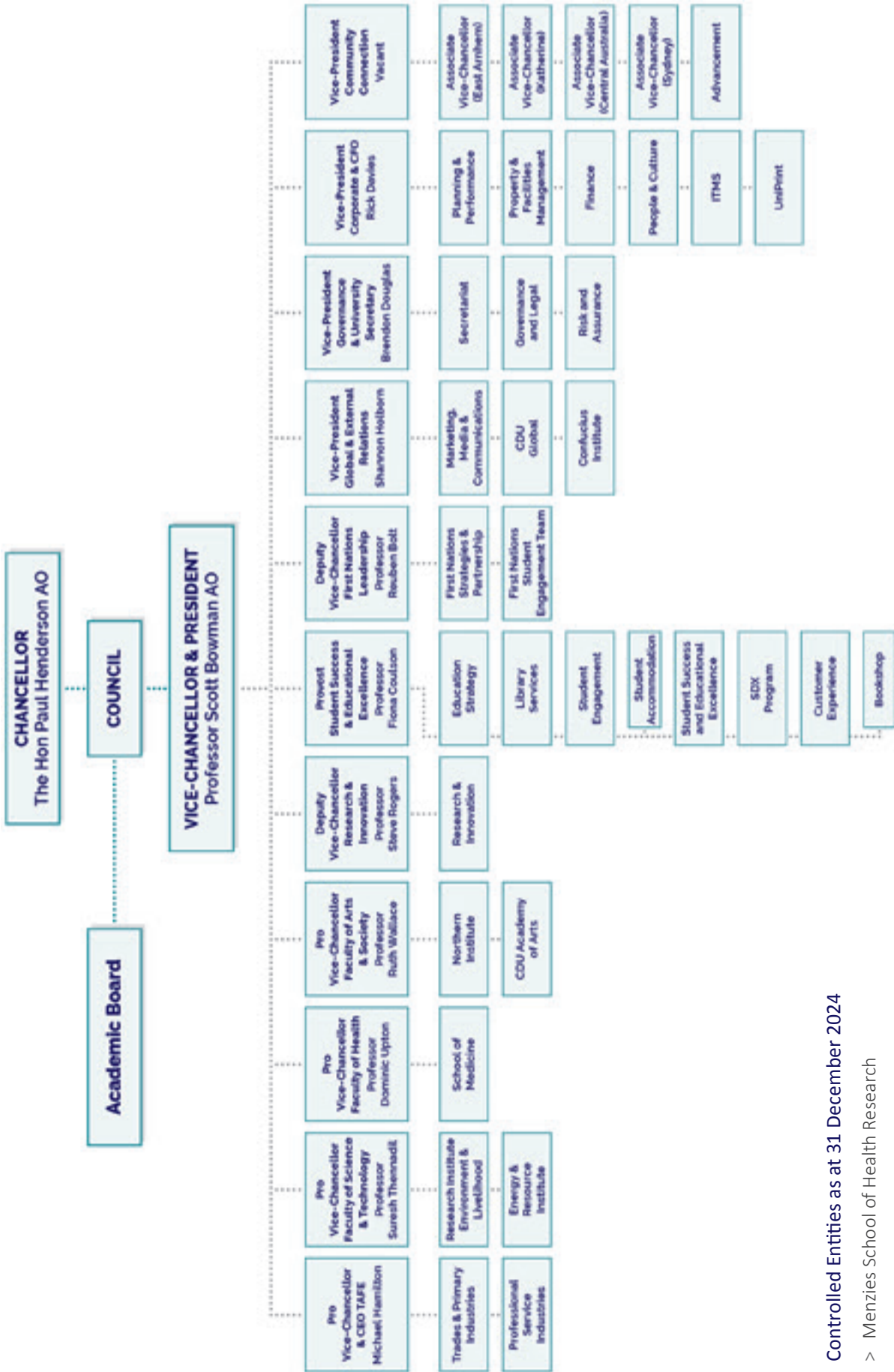
	Category	2023	Est. 2024	% Change 2023–2024
Total Research Income		84,357	89,544	6.1%
HERDC Research income (\$,000)	Total HERDC Research Income	65,122	66,837	2.6%
	Category 1, National competitive grants	35,156	42,005	19.5%
	Category 2, Other public sector research funding	19,108	12,064	-36.9%
	Category 3, Industry and other funding	9,700	11,393	17.5%
	Category 4, CRC income	1,158	1,375	18.7%
Research Block Grants		19,235	22,706	18.0%
Higher Degree by Research completions	Total	50	53	6.0%
	PhD	44	51	15.9%
	Masters	6	2	-66.7%
Higher Degree by Research load, EFTSL	Total	261.5	323.0	23.5%
	PhD	245.8	299.8	22.0%
	Masters	15.8	23.3	47.6%
Weighted publications	Total	422.6	419.7	-0.7%
	Books	13.8	23.3	69.1%
	Book chapters	24.0	20.4	-15.1%
	Journal articles	371.9	355.8	-4.3%
	Conference proceedings	12.9	20.3	56.9%

Total Research income includes Research Income reported in the Higher Education Research Data Collection (HERDC) and additional research income funded via Research Block Grants. HERDC research income figures are pre-audited figures and may vary slightly prior to submission

Staff Profile

Category		2023	2024	2023 Females	2024 Females	2023 Female %	2024 Female %
HE & VET academic staff (FTE)	Total Academic FTE	606	635	329	343	54%	54%
	Level E	49	49	21	24	42%	50%
	Level D	50	52	35	33	70%	64%
	Level C	99	114	51	59	52%	52%
	Level B	185	181	112	110	61%	61%
	Level A	223	239	110	116	49%	49%
Professional Staff (FTE)	Total General FTE	893	846	611	577	68%	68%
	HEW 10 and above	104	110	51	57	49%	52%
	HEW 9	77	67	52	45	67%	67%
	HEW 8	151	131	105	98	70%	75%
	HEW 7	162	161	114	114	70%	71%
	HEW 6	142	140	104	107	73%	76%
	HEW 5	151	159	101	104	67%	65%
	HEW 4	73	66	56	45	77%	69%
	HEW 3	18	11	15	7	84%	69%
	HEW 2	8	1	7	0	88%	0%
	HEW 1	6	0	5	0	83%	0%

Our structure



Controlled Entities as at 31 December 2024

- > Menzies School of Health Research
- > Bridging the Gap Foundation
(at the Menzies School of Health Research)

Corporate Governance

University Governance and Executive Management

Charles Darwin University Council is the governing body of the institution. Led by the Chancellor, Council governs the affairs of the University under the *Charles Darwin University Act 2003*.

Five standing committees assist Council in carrying out its responsibilities:

- > **Executive Committee** acts on behalf of Council as required on matters between regular meetings of Council that cannot be deferred until the next scheduled meeting. The Executive Committee of Council assists the Chancellor in determining the key performance indicators and remuneration package of the Vice-Chancellor and President and reviews their performance. The Executive Committee also provides advice to the Vice-Chancellor on the remuneration package of executive level staff.
- > **Academic Board** is the principal academic body charged with the academic governance of the institution with oversight of teaching, learning, research and research training. The Academic Board focuses strongly on the assurance and enhancement of the academic quality and standards of all programs and awards, as well as matters of academic integrity.
- > **Finance and Infrastructure Development Committee** is responsible for assessing and advising Council on the University's financial position and performance, its assets and liabilities, sustainability and viability, and its strategies relating to income, budget allocations, capital expenditure and investments.
- > **Audit, Risk and Compliance Committee** assists the Council in exercising governance, due care, diligence and skill in relation to discharging the following broad duties: internal controls and risk management, external and internal audit, and regulatory compliance and delegations.
- > **Nominations, Honorary Awards and Legislation Committee** oversees nominations for Council membership, provides advice and recommendations in relation to Honorary awards, and reviews any proposed legislation.

The Council is responsible for the University's strategic direction, and delegates its implementation and the management of day-to-day operations to the Vice-Chancellor, supported in this role by an executive team.



The affairs of the University are to be conducted by the Council

Council assumes stewardship of the University through a set of responsibilities set out in Section 8 of the *Charles Darwin University Act*.

Council works to:

- > Monitor the performance of the Vice-Chancellor
- > Approve the mission and strategic direction of the University
- > Approve the budget and business plan of the University
- > Oversee the management of the University, including approving significant commercial activities
- > Regularly review delegations under the Act
- > Monitor systems of accountability implemented by the University
- > Review management practices and performance of the University
- > Oversee risk management across the University.

The composition of the Council must be appropriate to its duties and responsibilities

The University Council is based on a board-of-trustees model, with members appointed or elected acting solely in the interests of the University and not as delegates or representatives of a particular constituency.

The structure, composition and size of Council are determined by the *Charles Darwin University Act 2003*. Direction in the Act ensures Council can discharge its responsibilities and duties adequately via the following membership:

- > Chancellor (appointed by the Council)
- > Vice-Chancellor
- > Chair of the Academic Board

- > Eight members appointed by the Administrator of the Northern Territory, representing a broad range of community interests and including financial and commercial expertise

- > One person elected by and from the full-time HE academic staff
- > One person elected by and from the full-time TAFE academic staff
- > One person elected by and from the undergraduate students, and
- > One person elected by and from the postgraduate students.

The Comprehensive Framework for Committees, Council and Academic reporting are continually being reviewed and improved to ensure the University meets all its obligations under the National Regulator Standards.

Education program for new Council members

The University has a professional development program for Council, with the following objectives:

- > To ensure new members of Council receive an induction program and appropriate core documentation and information
- > To ensure members are informed about their duties, including the legislative, regulatory and operational context of the University
- > To assist members of Council to develop and maintain a skill set that fits the governance and strategic needs of the University
- > To enhance organisational performance by improving the skill set of all members and chairs of Council committees.

Activities include a formal induction program, opportunities to attend various conferences, events and local functions in Darwin and other University campuses.

Written Code of Conduct

The University has a Code of Conduct for employees and has an effective suite of policies in relation to Fraud and Corruption as well as Privacy, Whistleblowing and Freedom of Information. Disclosures of such matters are facilitated by the use of eforms, and regular reports are provided to Council through the Audit, Risk and Compliance Committee.

Policy management

Governance has two dedicated Policy officers, one overseeing Academic and Research the other Corporate. The quality of CDU's policies and procedures ensures the University has a Governance Document Library that is fit for purpose and meets all legal obligations.

The University has a Policy Framework that governs the development, implementation and review of policy, procedures and other governance documents. The Policy Framework ensures that the University's policies are current, relevant and consistent with the University's strategic goals, governing legislation and regulatory obligations.

Legal

The CDU in-house legal team has developed templates to assist and streamline the legal process. The legal precedent library is on the CDU intranet and is available to all staff. This has resulted in faster turnaround times and consistency of approach ensuring the University's legal agreements are handled efficiently and professionally.

Enterprise risk management and internal audit

The University continues to embed its risk and assurance frameworks in line with the enterprise risk roadmap, which is regularly reviewed to reflect CDU priorities. The roadmap reflects the key activities to strengthen the University's risk management and assurance processes, with progress against and changes to the roadmap milestones reported quarterly to and endorsed by the Audit, Risk and Compliance Committee.

The Risk and Assurance function continues to enhance risk and assurance practices, and provide oversight and advice to improve the University's risk and assurance frameworks. Highlights for 2024 were:

- > Annual Risk Appetite Review to reflect any significant changes to the key activities that give risk to risk from CDU's internal or external environment that affect the risk profile and to ensure risk appetite and tolerance levels are consistent with the objectives and capabilities of CDU.
- > Implementation of the 2024 CDU Internal Audit Plan, development of management action plans in response to audit findings and recommendations, and the conduct of follow up audits to review implementation of the management actions.
- > Conduct of the bi-annual risk review and reporting to the relevant governance committees on the strategic, corporate and emerging risks that impact CDU's ability to achieve its strategic goals.

The University continued to benefit from the input and insight of both our Internal Audit Panel and the oversight of our regulators, as a key component in identifying and managing risks.

Health and safety

The University takes a proactive risk management approach to workplace health and safety issues to meet the requirements of occupational health and safety policy and legislation. A dedicated health and safety team has day-to-day responsibility for activities in this area, working with the University Health and Safety Committee. The Council reviews health and safety measures, incidents and incident management as part of its cycle of reports.

Records management

The University is working in compliance with Part 9 of the *Information Act*.

Freedom of information

The University is committed to protecting the privacy of staff, students and other stakeholders. Its privacy statement contains the policy for managing personal information collected. This is part of the procedures in place to protect the privacy of personal information in accordance with the information privacy principles set out in the Information Act (Northern Territory). The University received 12 Freedom of Information applications in 2024.

Modern slavery

CDU is committed to contribute to the elimination of modern slavery by 2030, and in collaboration with the wider university sector has strengthened its management of suppliers to identify and prevent suppliers that have been known to contain modern slavery in their practices from being selected in future procurement.

Students and decision-making

CDU students may be undertaking vocational, undergraduate or postgraduate study. Students at all levels are provided with multiple opportunities to participate in corporate and academic governance through committees including the University Council, Academic Board, and the Teaching and Learning Committees and the Research Committees of the faculties.



Council Members

as at 31 December 2024



The Hon Paul Henderson AO
Chancellor



Mr Ken Davies PSM
Deputy Chancellor



Professor Scott Bowman AO
Vice-Chancellor and President



Dr Louise King
Chair of Academic Board



Mr Dick Guit
Member appointed by
the Administrator



Mr Craig Graham
Member appointed by
the Administrator



Mr Mark Munnich
Member appointed by
the Administrator



**Emeritus Professor
Charles Webb**
Member appointed by
the Administrator



Dr Ruth Schubert
Member appointed by
the Administrator



**Associate Professor
Jon Mason**
Higher Education staff
member



Mr Ray Simpson
Vocational Education and
Training staff member



Mr John Odongo
Undergraduate student



Mr Nabin Kandel
Postgraduate student

Meetings of Committees

	Council Meetings		Finance and Infrastructure Development		Audit Risk and Compliance Committee		Nominations Honorary Awards and Legislation	
	A	B	A	B	A	B	A	B
Hon Paul Henderson AO	7	5	4	3	5	4	4	4
Professor Scott Bowman AO	7	7	4	2	5	3	4	4
Professor Louise King	7	6	0	0	5	1	4	3
Mr Ken Davies PSM	7	5	0	0	0	0	4	4
Mr Dick Guit OAM	7	5	4	2	0	0	0	0
Mr Craig Graham	7	6	0	0	0	0	0	0
Mr Mark Munnich	7	5	0	0	0	0	0	0
Emeritus Professor Charles Webb	7	7	0	0	0	0	0	0
Dr Ruth Schubert	7	6	0	0	0	0	0	0
Mrs Chrissy Zelle	4	4	0	0	0	0	0	0
Associate Professor Jon Mason	7	7	0	0	0	0	0	0
Mr John Bosco Odongo	3	2	0	0	0	0	0	0
Mr Nabin Kandel	4	3	0	0	0	0	0	0
Professor Reuben Bolt	0	0	1	1	0	0	1	1
Associate Professor Guzyal Hill	1	1	0	0	1	1	1	1
Mr Raymond Simpson	2	2	0	0	0	0	0	0
Professor Fiona Coulson	1	1	0	0	0	0	0	0

Legend

A = Number of Meetings eligible to attend

B = Number of Meetings attended

Includes out of session meetings/resolutions

Principal Officers

as at 31 December 2024



Professor Scott Bowman AO
Vice-Chancellor and President



Professor Fiona Coulson
Provost



Mr Brendon Douglas
Vice-President Governance and
University Secretary



Mr Rick Davies
Vice-President Corporate
and Chief Financial Officer



Ms Shannon Holborn
Vice-President Global
and External Relations



Professor Reuben Bolt
Deputy Vice-Chancellor,
First Nations Leadership



Professor Steve Rogers
Deputy Vice-Chancellor, Research and
Innovation and Acting Vice-President
Community Connection



Professor Ruth Wallace
Pro Vice-Chancellor Faculty of Arts
and Society



Professor Dominic Upton
Pro Vice-Chancellor Faculty of Health



Professor Suresh Thennadil
Pro Vice-Chancellor Faculty of Science
and Technology

Awards and Achievements

The 2024 Alumni Awards

Distinguished Alumni Award:

Cristina Rebelo Dos Santos Costa

Alumni Award for Industry Excellence:

Jared Archibald (winner) and Julie Cooper (special commendation)

First Nations Alumni Award:

Teegan Wattam (winner) and Stuart Yiwarr McGrath (special commendation)

Alumni Award for Early Career Achievement:

Geoffrey Radford (winner) and Zarah Ramoso (special commendation)

Alumni Award for Community Service:

Ramnik Singh Walia (winner) and Nilesh Dilushan (special commendation)

International Alumni Award:

Cristina Rebelo Dos Santos Costa (winner) and Francisca Tenorio (special commendation)

2024 Vice-Chancellor Awards

VC Award for Early Career Teaching Excellence:

Dr. Milad Bazli

VC Award for Higher Education Teaching Excellence

- Individual Award: Dr. Khyiah Angel

VC Award for Higher Education Teaching Excellence

- Team Award: First Nations Introduction to University Programs Team

VC Award for VET Teaching Excellence:

Cain Gilmour (winner) and Roz Jani (highly commended)

VC Award for First Nations Teaching Excellence:

Stacey Butcher

VC Award for Excellence in Teaching Support:

Education Work Integrated Learning Team (winner) and the Library Services Team (highly commended)

VC Award for Early Career Research:

Dr Hooman Mehdizadeh Rad

VC Award for Higher Degree by Research Supervision:

Professor Louise Maple-Brown (winner) and Professor Sami Azam (highly commended)

VC Award for Research Impact Award – Academic:

Ecosystem Services Research Group

VC Award for Innovative Research Partnerships

or Industry Engagement: Associate Professor Angela Devine (winner), Professor Kannoorpatti Krishnan (highly commended), and Dr Deepika Mathur (highly commended)

VC Award for Research Impact Award – Societal:

Dr Christine Schlesinger (winner), the Mathematics in Indigenous Languages Team (highly commended), and the Landscape Knowledge Visualisation Lab (highly commended)

VC Award for CDU Values Excellence:

Student Central Alice Springs (winner) and Amelia Kruger (highly commended)

VC Award for People Management Excellence:

Anthony Hornby

VC Award for Outstanding Contribution to Work, Health

and Safety: Agriculture and Rural Operations Team

VC Award for Outstanding Performance by a First

Nations Staff Member: Alana-Marie Tucker

VC Award for Outstanding Performance by a

Professional Staff Member – Level 1 to 6: Ashish Gharti Mager (winner) and Louis Long Vo (highly commended)

VC Award for Outstanding Performance by a

Professional Staff Member – Level 7 to 10: Emily Duckett (winner) and Troy Kippen (highly commended)



Review of activities

Goal 1 – Regional and Remote Opportunities



Nhulunbuy campus hosts inaugural graduation

CDU celebrated its first graduation ceremony in Nhulunbuy. The ceremony began with a special procession that included a Bunggul (cultural ceremony) from local Traditional Owners, Rirratjingu Aboriginal Corporation. Professor Yalmay Marika/Yunupingu delivered the occasional address, highlighting the importance of celebrating local achievements and fostering a future rich in both culture and education.

Outback trainers go the distance

CDU's on-station training program achieved record participation, with more than 300 students enrolled. Trainers from the Katherine Rural Campus collectively travelled more than 2,000 kilometres per week to deliver workplace-based training on some of the world's most isolated cattle properties, extending across the NT, Queensland, and Western Australia.

Central Australian Research Showcase

The Northern Institute hosted its inaugural Central Australian Research Showcase, spotlighting important social and policy research projects in the region. The event also provided a platform for attendees to explore potential collaborations and future research opportunities.

Recognition at national training awards

CDU was awarded Silver in the Large Training Provider of the Year category at the Australian Training Awards. CDU TAFE Early Childhood Education lecturer Maureen Simon was also a runner-up for VET Teacher/Trainer of the Year.

Empowering remote communities with essential skills

CDU received Aboriginal Responsive Skilling Grants funding to deliver vital training to First Nations communities. The grant supported on-Country skills training at seven remote hubs, servicing 20 remote NT communities.

Supporting First Nations social enterprise

At CDU's Alice Springs Campus, students at Standley Chasm completed business, retail, and tour guiding training to equip them with the professional skills needed to build and manage successful First Nations-owned social enterprises.

CDU joins NT Indigenous Business Network

CDU became an ally member of the Northern Territory Indigenous Business Network. Ally membership is extended to non-Indigenous organisations actively supporting First Nations employment, community, and business growth.

Inaugural Nhulunbuy Jobs Expo

The first Nhulunbuy Jobs Expo connected locals with job opportunities, education pathways, and skills training. The event attracted more than 35 local businesses and organisations offering employment opportunities and was led by the East Arnhem Regional Economic Growth Committee in partnership with local businesses, Traditional Owners and CDU.

Radicle roadshow

Inspired NT became part of CDU's Radicle Centre in 2024 after four years of successful STEM engagement in the Territory. The centre supports local science initiatives while expanding outreach across the NT. A highlight of the year was the opening of a science education and experimentation centre for children at the Education and Community Precinct.

Goal 2 – Be the most recognised university for Australian First Nations training, education and research

Historic National Science and Technology Council appointment

CDU Deputy Vice-Chancellor First Nations Leadership, Professor Reuben Bolt, made history as the first person of Aboriginal heritage appointed to the National Science and Technology Council. The Council is the peak body providing expert advice to the Prime Minister and Cabinet on Australia's science and technology priorities.

Dr Bilawara Lee

CDU Larrakia Academic In-Residence, Dr Bilawara Lee (Aunty B), was awarded the Order of Australia Medal (OAM) at an Australian Honours and Awards investiture ceremony.

First Nations Student Pathway programs

Almost 100 students from across the Northern Territory applied for CDU's First Nations Student Pathway Programs. The program offers mentoring, tutoring, and tailored academic support to help students transition into higher education in Darwin, Katherine, and Alice Springs. Nearly nine out of every ten students who started the program completed it, with half progressing into tertiary studies.

Increased First Nations participation at university

There were 422 commencing First Nations enrolments in 2024, up from 352 (+8.16 per cent) in 2023. The University's First Nations cohort recorded a 63.5 per cent success rate with 138 students completing their studies.

Jack Thompson AM delivers Vincent Lingiari Memorial Lecture

Australian actor and First Nations advocate Jack Thompson AM delivered the 23rd annual Vincent Lingiari Memorial Lecture. In his unscripted talk, he reflected on his experiences in 1955 and the profound impact Vincent Lingiari's leadership had on labour laws and rural workplace culture following the 1966 Wave Hill Station walk-off.

Garma festival

CDU had a significant presence at the 2024 Garma Festival of Traditional Cultures. Professor Reuben Bolt and First Nations Teacher Education Hub Director Larissa Pickalla led a session on 'Empowering First Nations Communities Through Meaningful Connection'. Three First Nations students also took part, supporting CDU's engagement at the event.

New book about First Nations history

CDU Lecturer in Colonial History, Dr Robyn Smith, published 'Licence to Kill: Massacre Men of Australia's North'. The book is the result of years of research documenting the massacres of Aboriginal people across northern Australia from 1824 to the 1980s.

Celebrating 50 years of Batchelor Institute

CDU joined the 50th-anniversary gala dinner for the Batchelor Institute of Indigenous Tertiary Education (BIITE) at the Darwin Convention Centre. The event

brought together staff, students, alumni, and community stakeholders to honour BIITE's five decades of contribution to Indigenous education.



'Wise One' First Nations design launched

In October, the First Nations Leadership portfolio unveiled a new design titled 'Wise One', created by artist Sharona Bishop. The design attracted strong interest from across the University, prompting it to become an official part of the CDU brand. Depicting a cockatoo, 'Wise One' will now be featured across the First Nations Student Support Guide and student site 'Campfire', as well as across the University's First Nations apparel and wider student, staff and alumni network. The imagery is also gifted as a plaque to CDU's doctoral graduates.

Goal 3 – Advance our research capacity and capability to deliver reach and impact

2024 Research Performance



Higher Degree by Research student growth

CDU had 417 Higher Degree by Research (HDR) students by the end of 2024, up from 358 in 2023. International HDR student enrolments rose from 90 in 2023 to 118 in 2024.

Engineers recognised among the world’s best

There were 19 CDU academics named among the world’s top 2 per cent most-cited scientists in the Stanford University and Elsevier World’s Top 2% Scientists List. CDU’s engineering researchers made a strong showing, with recognition for Dr Milad Bazli, Research Professor Kannoopatti Krishnan, Dr Naveen Kumar Elumalai, Professor Bogdan Dlugogorski and Associate Professor Erwin Chan.

Strengthening defence-research partnerships

With the support of the NT Government, CDU joined the Queensland Defence Science Alliance (QDSA). CDU complements the alliance with expertise in areas

critical to northern Australia, such as tropical health, drone operations in remote areas, advanced manufacturing and cybersecurity.

Tackling Australia’s invertebrate extinction crisis

Ecologist Professor John Woinarski led a national study revealing that up to three native invertebrate species are becoming extinct in Australia each week. The study involved CDU’s Professor Sarah Legge and Professor Brett Murphy, alongside researchers from leading institutions nationwide.

Nanofibres for the future

Researchers at CDU’s Casuarina campus nanofibre fabrication facility have produced fibres 10 to 100 times thinner than a spider’s silk. Created through electrospinning, these fibres have applications in bulletproof vests, water purification filters, and medical equipment.

Nation-leading groundwater research

A CDU-led project delivered Australia’s largest database of groundwater recharge rates, a key

resource for sustainable water management. Lead author and CDU PhD candidate Stephen Lee said the database would help guide national water policy and planning.

Boosting Australian agriculture and aquaculture

A research and knowledge exchange between CDU and China’s Hainan and Shantou universities was formed to improve Australian seafood quality, develop new dragon fruit cropping techniques, and enhance agricultural knowledge sharing. The National Foundation for Australia-China Relations supports the project.

Expanding birthing on-Country services

The Molly Wardaguga Institute for First Nations Birth Rights secured almost \$5 million from the Federal Government’s Medical Research Future Fund to expand vital birthing-on-Country services.



Rare Speartooth Shark discovery

A collaboration between CDU researchers and Yugul Mangi Rangers uncovered a new population of the rare and threatened Speartooth Shark (*Glyphis glyphis*) in the NT's Roper River system, expanding knowledge of this critical ecosystem. These sharks, which can grow to more than 2.5 metres in length, are some of the only species around the world that can be found in rivers. Speartooth Sharks are listed as Critically Endangered under Australia's national environmental legislation, with a very small population and a restricted geographic range.

Revealing the lives of blue whales

A project led by marine scientist Dr Karen Edyvane captured never-before-seen footage of blue whale reproductive and calving behaviour in tropical waters. The findings attracted international attention and helped expand our understanding of this elusive species.

Protecting Earth's oldest animals

Ecologist Dr R. Keller Kopf led a global study on animal ageing, revealing the urgent need to protect the planet's oldest species. The study, conducted with collaborators from universities in Australia, the UK, the US, and Kenya, was published in *Science*, one of the world's leading peer-reviewed journals.

Cannabis extract targets melanoma cells

A study co-authored by pharmaceutical lecturer Dr Nazim Nassar showed a cannabis extract can slow down melanoma cell growth and increase melanoma cell death rates. International media picked up a media release about Dr Nassar's research and he appeared in 484 global publications that reached 1.1 billion people. The exposure led to a US pharmaceutical company contacting Dr Nassar for a research collaboration.

Health devices' hidden risks exposed

Researchers from CDU's Faculty of Engineering, IT and Environment demonstrated the security vulnerabilities of internet-connected health monitoring devices. By successfully hacking three common products, they raised global awareness of potential patient risks.

Improving food security in Timor-Leste

A CDU-led initiative was launched in 2024 to boost agricultural productivity and food security in Timor-Leste. The project aims to increase yields with the same labour input, reduce labour needs for the same yield, or achieve a combination of both outcomes.



Dr Nazim Nassar made global headlines following his research around melanoma and cannabis.

Goal 4 – Grow our reach and impact across the Northern Territory, Australia and beyond

Building ties with Indonesia

CDU launched an Indonesian Taskforce to strengthen relationships with one of the Territory's closest neighbours. This included several ambassador-led trips promoting CDU's educational offerings to Indonesian students and institutions.

Expanding CDU's global reach

Throughout 2024, CDU representatives travelled internationally to build connections and promote the University in China, Korea, India, Sri Lanka, and Nepal. This helped grow the Territory's international education footprint.

Learning from Alaska

A CDU delegation visited the University of Alaska to gain insights into how other institutions embed First Nations knowledge into curriculum and research, strengthening CDU's commitment to culturally informed education.

Advancing gender equality with Our Watch

On International Women's Day, CDU signed a Memorandum of Understanding with Our Watch to embed gender equality initiatives within the University and broader community. The agreement introduced Respect and Equality principles into CDU's TAFE framework, curriculum, and policy updates, and cultivated leadership champions for change.

Recognising Territory champions

In April, CDU awarded an Honorary Doctor of Letters to entrepreneur and philanthropist John 'Foxy' Robinson AO for his outstanding contribution to the Territory's tourism and hospitality sectors. Additional honorary doctorates were conferred on Greek culture advocate Angelica Poulos OAM, historians Derek Pugh OAM, Peter Forrest, and Indigenous land manager Peter Christophersen.

NT News Woman of the Year

CDU sponsored the NT News' inaugural NT Woman of the Year Awards, which recognised the Territory's most influential women across industry, the public sector, sport, tourism and hospitality, and First Nations communities. CDU Careers Coordinator Caroline Thompson was a joint winner in the Angels Among Us category, while Professor Dianne Stephens and Professor Ruth Wallace were named as award finalists.

CDU's 2024 election priorities

Ahead of the 2024 NT election, CDU outlined 22 key policy requests for the incoming government, advocating for initiatives in infrastructure, the economy, First Nations leadership, and scientific engagement to support the Territory's future.

True Justice program launched

A partnership with the North Australian Aboriginal Justice Agency saw the introduction of a new five-day elective unit, *True Justice: Deep Listening on Country*. The program provides second-year Bachelor of Laws students with unique insights into how First Nations peoples interact with the Australian legal system.

Teach For Australia partnership

CDU joined forces with Teach For Australia (TFA) for the first time, providing wraparound support for education students to earn while they learn. The partnership guarantees teaching placements in TFA-partnered schools while students complete a Bachelor of Education Secondary.



Maiti Nepal

A collaborative initiative between CDU and Maiti Nepal is addressing social issues such as human trafficking, child abuse, and prostitution by supporting and educating marginalised women and children. In 2024, the University sponsored the education of five students from Maiti Nepal, assisting them in gaining academic education and vocational training to help them build self-sufficient and independent lives.





Goal 5 – Prioritise environmental and organisational sustainability

Strengthening our commitment to sustainability

CDU revised its Sustainability Plan and established a Sustainability Committee to help map, measure and report against benchmarks set by the United Nations Sustainable Development Goals. These globally recognised goals guide CDU's environmental, social and organisational priorities.

Responding to the GenAI challenge

In response to the rapid growth of generative AI tools, CDU Library developed a comprehensive suite of resources in 2024 to help students use AI tools ethically, responsibly, and in accordance with university guidelines. These resources are delivered in multiple formats to support student learning and responsible AI use.

New security services with a community focus

Neptune Security was appointed as CDU's official security provider. Alongside core security services, Neptune delivers free self-defence workshops, operates the student bus service, and maintains partnerships with the NT Police Force, Victims of Crime NT, and Neighbourhood Watch NT. These initiatives help create a safer, more connected, and supportive university community.

Keeping cool in the city

The Education and Community Precinct was designed with sustainability at its core. The porcelain tiles and horizontal aluminium louvres built into the facility's facade help keep the building cool year-round by reflecting Darwin's harsh weather conditions and promoting air flow. Smart lighting, which detects activity in classrooms, helps reduce energy consumption at the new campus.

Climate Action Barometer

CDU commissioned the Climate Action Barometer to assess staff and student engagement with the University's sustainability initiatives. The report provided recommendations to strengthen CDU's commitment to climate action, including reducing emissions, promoting paperless operations, and introducing additional sustainability-focused practices.

Reduction in gender pay gap

In 2024, CDU's gender pay gap, as reported by the Workplace Gender Equality Agency (WGEA), decreased to 3.3 per cent, down from 5.9 per cent in 2023 and 7.8 per cent in 2022. WGEA classifies CDU's pay gap as neutral, placing the University among the top five Australian universities reporting through WGEA for gender pay equity.

Goal 6 – Create a student experience where every student can connect and succeed

Project 21

CDU continued to support Down Syndrome NT's Project 21 throughout the year. The program promotes inclusive recruitment practices and demonstrates the benefits of employing people with disability. Some of the program's first cohort of students graduated with a Certificate I in Hospitality in 2024.

Strong growth in student satisfaction

CDU's overall Net Promoter Score (NPS), a key indicator of how positively students rate their university experience, increased to +28.6 in 2024, up from +17.8 in 2023. CDU TAFE's NPS also rose to +29.0, up from +27.0 the previous year, reflecting a strong improvement in student satisfaction.

Overhauling student support for better outcomes

The O-Week program was refreshed to include a four-week transition period for new students, delivering a mix of academic and social activities tailored to ease students into university life. Thousands of students accessed the program in its first year, receiving timely information and support when they needed it most.

CDU students compete on the world stage

A team of CDU students travelled to Guangzhou, China, to compete in the semi-finals of the fifth Urban Innovation and Entrepreneurship Competition. Representing CDU with a project on medical waste

management, they presented alongside 34 other university teams from around the world.

New courses launched in 2024

CDU expanded its academic offering with five new courses delivered in 2024:

- > Bachelor of Health Science/ Master of Physiotherapy
- > Bachelor of Primary Education/ Master of Secondary Teaching
- > Master of Information Technology (Artificial Intelligence)
- > Master of Teaching Birth to Five Years
- > Bachelor of Education (Conversion)

Generative AI Action Plan implemented

CDU submitted its Generative AI Action Plan to the Tertiary Education Quality and Standards Agency in July and began implementation. Key initiatives included audits of assessments and courses, a 'traffic light system' to guide AI use, and accreditation processes that incorporate AI. Multiple projects under the Learning and Teaching sub-committee continue to advance CDU's leadership in this evolving space.

CDU visits NT schools

CDU engaged with students at 35 schools through 38 events and 19 student recruitment activities. This included four major Open Day events, which attracted around 4,000 prospective students and community members.

Artistic expression through corrections education

Greenbush Art Group, featuring Alice Springs artists in CDU's corrections education program, exhibited more than 170 artworks. This marked the first year participants had access to the Certificate IV Visual Arts program, offering new opportunities for creativity and personal development.

Students shaping university decisions

Nearly 250 students contributed to improving CDU's policies and services through the Your Voice Student Network. Over the year, the network ran 40 focus groups, surveys, and interviews on issues ranging from academic support for parenting students to curriculum co-design, rural and remote nursing and midwifery support, emotional distress protocols, and more.

WorldSkills success in Central Australia

For the first time, CDU hosted regional WorldSkills competitions across several campuses, with Central Australian students excelling. Four students from Alice Springs, studying Beauty, Hairdressing, and in-school VET programs, qualified to represent the Territory at the 2025 WorldSkills Australia National Championships and Skills Show in Brisbane.



Goal 7 – Be an employer of choice where people feel supported and happy

CDU People Enabling Plan refreshed

CDU consolidated and updated a range of equity, diversity, and inclusion objectives within a revised People Enabling Plan 2022–2026. Alongside this, several training and awareness sessions were introduced, strengthening collaborations with peak organisations and the Northern Territory Anti-Discrimination Commission.

Enhancing campus safety and psychosocial wellbeing

A new psychosocial risk register and action plan was rolled out, including awareness sessions and lockdown exercises at all campuses. These initiatives will extend to the new Education and Community Precinct and Nhulunbuy Campus as part of CDU's commitment to staff and student safety.

Listening to our people: Pulse VOICE survey

The annual Pulse VOICE staff survey recorded a 73 per cent favourable response rate in 2024, slightly up from 72 per cent in 2023. The survey's 67 per cent response rate reflects strong staff engagement, with most employees affirming CDU as a positive and supportive place to work.

Prioritising First Nations employment

The university continued to prioritise affirmative action recruitment, with 36 per cent of advertised positions carrying this provision. By year's end, CDU employed 59 full-time equivalent First Nations staff. Supporting this effort, CDU engaged The Mumpara (Pandanus) Group Pty Ltd as its first First Nations-only recruitment agency, further strengthening culturally appropriate recruitment pathways.

Growth in professional development opportunities

CDU's Professional Development calendar expanded significantly in 2024. The People and Culture team delivered 93 sessions with 1,879 attendees, a strong increase from 37 events and 1,168 attendees the previous year.

Staff-led quality improvement through Quality Champions

The new Quality Champion initiative gave staff the opportunity to proactively improve the workplace, either individually or as a team. Among the outcomes was the creation of an emergency support fund for students experiencing or escaping violence.

Mentoring for career growth

The Mentoring for Impact program gained momentum, with 27 staff acting as mentors to 32 mentees, including participation from executive leaders. The program continues to foster meaningful professional development and leadership growth across the University.

Professional Staff Conference builds connections and skills

Around 120 staff members attended the 2024 Professional Staff Conference, themed 'Thriving Personally and Professionally'. The event featured speed networking with CDU executive leaders, alongside workshops covering topics such as The Significance of Core Values and Mastering Procrastination and Prioritisation.

Recognising long-standing contributions

CDU celebrated the dedication of its people, recognising two staff members for 35 years of service, two for 30 years, and 87 who reached a 10-year milestone, highlighting the loyalty and commitment of the CDU community.

Summary of financial information

Financial Performance

The University's consolidated group net result from continuing operations was \$2.9 million surplus for 2024. This is an improved financial result compared to the \$18.3 million deficit in the previous year.

Revenue increased by 10 per cent compared to 2023, driven by a rise of \$18 million in gross international student fees and a \$19.7 million increase in Australian Government financial assistance. This growth was partially offset by a \$9 million reduction in financial contributions from the Northern Territory Government. The University's net result from continuing operations for 2024 also included \$3.1 million in revenue related to capital projects.

Expenditure in 2024 was higher than the previous year by \$18 million. Employment costs rose by 5 per cent due to wage indexation of 2 per cent and investment in growth capacity, including the initial recruitment of staff developing the Medical Program. Other cost increases included international student scholarships, student recruitment agent fees, leases, utilities and facilities management.

Financial Position

The University's net assets reduced by \$11.1 million from 2023. Total assets increased \$15.9 million through increases in Property, Plant and Equipment, with the completion of Education and Community Precinct (ECP) and the Trades Training Centre at Casuarina. Total liabilities increased by \$27 million, mainly due to increased contract liabilities and the final drawdown of the loan for the construction of the ECP. Cash and cash equivalents have remained consistent with the prior year.

Future Direction

The University continues the implementation of the *Strategic Plan 2021-2026*. The strategy has seven goals around the themes of regional and remote learning opportunities, recognition for Indigenous education, research capability, student experience and connection, becoming an employer of choice, amongst others. The strategy is supported by several core plans and enabling plans.

Although international student income growth was strong in 2024, challenges emerged with future strategy. In 2022, CDU established a strategy to grow international student numbers. This ambition sits alongside the NT Government's own goals for 10,000 international students in the NT. In 2024, the Federal Government limited the visa processing for international students. Uncertainty in the Australian market led international students to seek out alternative locations. CDU were eventually provided a soft cap of 2,200 student visas, which will be achieved in 2025. This cap is substantially under the original strategy. To adjust for the reduced international student intake, the University has employed tighter cost controls and sought out further revenue-generating opportunities. The transnational educational strategy will see higher education programs delivered in the United Kingdom in 2025.

The completion of the ECP, has brought several benefits to Darwin since its opening in October 2024. The ECP attracts hundreds of staff and thousands of students to the CBD, which contributes to the city's economy. The ECP offers state-of-the-art teaching and research spaces, including an art gallery and a modern library, providing students with resources to excel academically and engage with the community. Plans are also underway for the future construction of purpose-built student housing to support the future growth of Darwin as a leading regional centre for learning and innovation.

Consolidated Income Statement

For the year ended 31 December 2024

	Group		Parent Entity	
	YTD 2024 \$'000	YTD 2023 \$'000	YTD 2024 \$'000	YTD 2023 \$'000
Income from continuing operations				
Australian Government financial assistance				
Australian Government grants	138,640	122,208	119,113	104,338
HELP- Australian Government payments	36,008	32,785	36,008	32,785
NT Government financial assistance	18,685	27,435	12,340	18,450
HECS- HELP student payments	4,300	5,684	4,300	5,684
Fees and charges	154,815	133,228	153,317	132,474
Consultancy and contract fees	40,970	39,565	25,881	26,640
Other revenue	18,307	14,101	16,412	13,839
Investment revenue	12,799	10,222	9,578	7,330
Gains on disposal of assets	-	-	24	67
Share of profit on investments accounted for using the equity method	514	407	514	407
Total revenue and income from continuing operations	425,038	385,635	377,487	342,014
Expenses from continuing operations				
Employee-related expenses	233,754	224,026	198,303	190,636
Depreciation	23,053	19,304	22,336	18,575
Repairs and maintenance	7,301	6,626	7,001	6,320
Impairment of assets	287	348	287	348
Losses on disposal of assets	106	3	-	-
Other expenses	157,619	153,643	152,729	146,738
Total expenses from continuing operations	422,120	403,950	380,656	362,617
Net result from continuing operations	2,918	(18,315)	(3,169)	(20,603)

The above Consolidated Income Statement should be read in conjunction with the accompanying notes.

Consolidated Statement of Comprehensive Income

For the year ended 31 December 2024

	Group		Parent Entity	
	2024 \$'000	2023 \$'000	2024 \$'000	2023 \$'000
Net result from continuing operations	2,918	(18,315)	(3,169)	(20,603)
Items that will not be reclassified to profit or loss				
Loss on value of financial assets at fair value through other comprehensive income	(14,186)	(13,085)	(14,291)	(13,093)
Other	-	76	-	-
Total other comprehensive loss	(14,186)	(13,009)	(14,291)	(13,093)
Total comprehensive loss from continuing operations	(11,268)	(31,324)	(17,460)	(33,696)

The above Statement of Comprehensive Income should be read in conjunction with the accompanying notes.

Consolidated Statement of Financial Position

As at 31 December 2024

	Group		Parent Entity	
	2024 \$'000	2023 \$'000	2024 \$'000	2023 \$'000
ASSETS				
Current assets				
Cash and cash equivalents	101,481	98,992	81,150	84,924
Receivables	15,537	7,624	14,571	6,390
Inventories	661	766	661	766
Other financial assets	120,408	174,810	104,912	158,757
Other assets	11,507	9,113	10,829	8,510
Total current assets	249,594	291,305	212,123	259,347
Non-current assets				
Biological assets	1,017	1,414	1,017	1,414
Other financial assets	1,880	1,669	-	-
Investments accounted for using the equity method	2,198	1,684	2,198	1,684
Property, plant and equipment	735,578	678,337	734,118	676,677
Total non-current assets	740,673	683,104	737,333	679,775
Total assets	990,267	974,409	949,456	939,122
LIABILITIES				
Current liabilities				
Trade and other payables	14,249	21,470	13,443	20,762
Lease liabilities	3,923	2,752	3,784	2,752
Provisions	34,454	31,304	28,657	26,339
Other liabilities	114,875	96,739	124,077	104,180
Total current liabilities	167,501	152,265	169,961	154,033
Non-current liabilities				
Lease liabilities	29,766	26,548	29,766	26,548
Borrowings	126,500	118,375	126,500	118,375
Provisions	2,790	2,200	2,353	1,820
Other liabilities	244	418	208	218
Total non-current liabilities	159,300	147,541	158,827	146,961
Total liabilities	326,801	299,806	328,788	300,994
Net assets	663,466	674,603	620,668	638,128
Equity				
Reserves	285,587	299,050	284,757	298,325
Restricted funds	58,783	49,396	58,783	49,396
Retained earnings	319,096	326,157	277,128	290,407
Total equity	663,466	674,603	620,668	638,128

The above Statement of Financial Position should be read in conjunction with the accompanying notes.

Consolidated Statement of Changes in Equity

For the year ended 31 December 2024

	Restricted Funds \$'000	Reserves \$'000	Retained Earnings \$'000	Total \$'000
GROUP				
Balance at 1 January 2023	48,699	293,476	363,903	706,078
Net result	-	-	(18,315)	(18,315)
Other comprehensive loss	-	(13,009)	-	(13,009)
Total comprehensive loss	-	(13,009)	(18,315)	(31,324)
Transfers from / (to) restricted fund reserve	697	-	(697)	-
Transfers to / (from) revaluation reserves	-	18,583	(18,734)	(151)
Balance at 31 December 2023	49,396	299,050	326,157	674,603
Balance at 1 January 2024	49,396	299,050	326,157	674,603
Net result	-	-	2,918	2,918
Other comprehensive loss	-	(14,186)	-	(14,186)
Total comprehensive income / (loss)	-	(14,186)	2,918	(11,268)
Transfers from / (to) restricted fund reserve	9,387	-	(9,387)	-
Transfers to / (from) revaluation reserves	-	723	(723)	-
Related party disposals	-	-	131	131
Balance at 31 December 2024	58,783	285,587	319,096	663,466
PARENT				
Balance at 1 January 2023	48,699	292,835	330,291	671,825
Net result	-	-	(20,603)	(20,603)
Other comprehensive loss	-	(13,093)	-	(13,093)
Total comprehensive loss	-	(13,093)	(20,603)	(33,696)
Transfers from / (to) restricted fund reserve	697	-	(697)	-
Transfers to / (from) revaluation reserves	-	18,583	(18,583)	-
Balance at 31 December 2023	49,396	298,325	290,407	638,128
Balance at 1 January 2024	49,396	298,325	290,407	638,128
Net result	-	-	(3,169)	(3,169)
Other comprehensive loss	-	(14,291)	-	(14,291)
Total comprehensive loss	-	(14,291)	(3,169)	(17,460)
Transfers from / (to) restricted fund reserve	9,387	-	(9,387)	-
Transfers to / (from) revaluation reserves	-	723	(723)	-
Balance at 31 December 2024	58,783	284,757	277,128	620,668

The above Statement of Changes in Equity should be read in conjunction with the accompanying notes.

Consolidated Statement of Cash Flows

For the year ended 31 December 2024

	Group		Parent Entity	
	2024 \$'000	2023 \$'000	2024 \$'000	2023 \$'000
Cash flows from operating activities				
Australian Government grants	176,594	161,745	154,267	140,652
OS-HELP (net)	(205)	(42)	(205)	(42)
NT Government grants	18,277	24,713	12,340	18,526
HECS-HELP student payments	7,640	4,409	7,640	4,409
Receipts from student fees and other customers	215,690	201,156	200,023	186,555
Interest received	12,981	6,835	9,625	5,495
Dividend received	623	808	623	751
Payments to suppliers and employees	(397,790)	(367,023)	(357,631)	(329,320)
Lease interest payments	(619)	(522)	(612)	(509)
Low value / short term lease payments	(6,609)	(3,115)	(6,432)	(2,856)
Net cash from operating activities	26,582	28,964	19,638	23,661
Cash flows from investing activities				
Proceeds from sale of property, plant and equipment	24	199	24	178
Proceeds from sale of biological assets	369	278	369	278
Payments for property, plant and equipment	(71,953)	(116,798)	(71,303)	(116,302)
Payments for biological assets	(45)	(81)	(45)	(81)
Other investing inflows	42,683	5,152	42,500	10,000
Other investing outflows	(75)	(33,621)	-	(32,000)
Net cash used in investing activities	(28,997)	(144,871)	(28,455)	(137,927)
Cash flows from financing activities				
Payment of principal portion of lease liabilities	(3,221)	(2,041)	(3,082)	(1,927)
Proceeds from borrowings	8,125	107,397	8,125	107,397
Net cash from financing activities	4,904	105,356	5,043	105,470
Net increase/(decrease) in cash and cash equivalents	2,489	(10,551)	(3,774)	(8,796)
Cash and cash equivalents at the beginning of the financial year	98,992	109,543	84,924	93,720
Cash and cash equivalents at the end of the financial year	101,481	98,992	81,150	84,924

The above Statement of Cash Flows should be read in conjunction with the accompanying notes.



Honorary awards roll

Master of Arts

Mr Peter Strachan HonMArts (2020) (Deceased)

Doctor of Arts

Dr Gawirrin Gumana HonDArts (2007)

Dr Judith Ann Weepers HonDArts (2007)

Dr Donna Ah Chee HonDArts (2022)

Dr Michael Long (HonDArts 2022)

Dr John Paterson HonDArts (2022)

Dr Robyne Burridge OAM HonDArts (2022)

Doctor of Economics

Dr Jose Sun-Say Yu HonDEc (1999)

Dr Neil Conn AO HonDEc (2001)

Dr Susilo Bambang Yudhoyono AC HonDEc (2017)

Dr Hitoshi Okawa HonDEc (2023)

Doctor of Education

Dr Dato Seri Samy Vellu HonEdD (1998)

Dr Nancy Giese AO OBE HonEdD (2004) (Deceased)

Emeritus Professor Ron McKay HonEdD (2006)
(Deceased)

Dr Raymattja Marika HonEdD (2007) (Deceased)

Dr Peter Plummer HonEdD (2009)

Dr Waymamba Yinamara Gaykamangu HonEdD (2014)

Dr Kevin Davis AM HonEdD (2015)

Dr Kathy Guthadjaka HonEdD (2018)

Doctor of Laws

The Hon Austin Asche AC KC HonLLD (1994) (Deceased)

The Hon Brian Martin AO MBE HonLLD (2007)

The Hon Dean Mildren RFD KC HonLLD (2013)

Doctor of Letters

Dr Harold Garner HonDLitt (1997) (Deceased)

Dr George Chaloupka HonDLitt (1998) (Deceased)

Dr Miriam Rose Ungunmerr-Baumann HonDLitt (2002)

The Hon Mr Ted Egan AO HonDLitt (2002)

Dr Patricia Miller AO HonDLitt (2006)

Dr RG (Dick) Kimber AM HonDLitt (2006)

Dr John Ah Kit HonDLitt (2009)

Dr Thomas Calma HonDLitt (2010)

The Hon Daryl Manzie HonDLitt (2010)

Professor Ian Chubb AC HonDLitt (2011)

Professor Judith Whitworth AC HonDLitt (2011)

Dr Kay Rala Xanana Gusmao HonDLitt (2012)

Dr Jack Thompson HonDLitt (2012)

Dr Elaine L awurrpa Maypilama HonDLitt (2013)

The Hon Tom Harris HonDLitt (2015)

The Hon Christopher Burns HonDLitt (2016)

Dr Otto Bulmaniya Campion HonDLitt (2020)

Dr Grace Miguyie Daniels HonDLitt (2020)

Dr Janie Mason HonDLitt (2020)

Dr Alan Morris AO HonDLitt (2020)

Dr Sabaratnam Prathapan HonDLitt (2020)

Dr Richard Ryan AO HonDLitt (2021)

Dr Samuel Bush-Blanasi HonDLitt (2023)

Dr Eileen Cummings HonDLitt (2023)

Dr Bilawara Lee HonDLitt (2023)

Dr Warren Snowdon HonDLitt (2023)

Dr Harold Thomas HonDLitt (2023)

Dr John 'Foxy' Robertson HonDLitt (2024)

Dr Peter Forrest HonDLitt (2024)

Dr Derek Pugh OAM HonDLitt (2024)

Dr Paricia Ansell-Dodds HonDLitt (2024)

Dr Angelica Poulos OAM HonDLitt (2024)

Dr Peter Christopherson HonDLitt (2024)

Professor Anne Martin AM HonDLitt (2024)

Ms Lorraine Williams HonDLitt (2024)

Doctor of Science

Emeritus Professor James Thomson AM HonDSc (1992)
(Deceased)

Fr Frank Flynn AC HonDSc (1993) (Deceased)

Dr John Hargrave AO MBE HonDSc (1995)

Emeritus Professor Malcolm Nairn AM HonDSc (1999)

Professor John Mathews HonDSc (2000)

Dr Len Notaras AM HonDSc (2008)

Dr Alan Walker HonDSc (Posthumously awarded, 2008)

Dr Sadhana Mahajani HonDSc (2010)

Professor Jonathan Carapetis HonDSc (2013)

Professor Grahame Webb HonDSc (2013)

Professor John Wakerman HonDSc (2013)

Mr Jiro Okada HonDSc (2014)

Professor Ross Baillie HonDSc (2017)

Dr Dean Patterson HonDSc (2018)

Dr Simon Maddocks HonDSc (2021)

Dr John Horswell HonDSc (2022)

Doctor of the University

General Peter Cosgrove AC MC HonDUni (2001)
 The Hon Paul Everingham AO HonDUni (2003)
 Dr Valerie Asche HonDUni (2007) (Deceased)
 Emeritus Professor Helen Garnett PSM HonDUni (2016)
 The Hon Sally Thomas AC HonDUni (2018)

Companion of the University

Mr Keith Pennell OAM (2001)
 Mr Paul Sitzler OAM (2003) (Deceased)
 Mrs Minna Sitzler AM (2003)
 Mr Michael Martin OAM (2011)
 Ms Angelica Poulos (2011)
 Mr Ian Kew (2011)
 Mr Earl James AM (2012)
 Mrs Wendy James OAM (2012)
 Professor David Parry (2012)
 Ms Elizabeth Martin OAM (2012)
 Ms Diana Jarvis (2013)
 Ms Terry Underwood AM (2013)
 Mr Allan Garraway (2013)
 Ms Veronica Dobson AM (2013)
 Mr Neil Ross (2015)
 Mr Richard Giles (2015)
 Mr Rex Wild KC (2016)
 Mrs Annette Burke (2016)
 Mr Franck Gohier (2017)
 Mrs Deborah Fracaro (2019)
 Mr Raymond Adams (2020) (Deceased)
 Mr Ken Suter (2022) (Deceased)

Award of Emeritus Professor

Emeritus Professor Alan Powell (1992)
 Emeritus Professor Ron McKay (2006) (Deceased)
 Emeritus Professor Malcolm Nairn AM (1999)
 Emeritus Professor James Thomson AM (1992) (Deceased)
 Emeritus Professor David Carment AM (2008)
 Emeritus Professor Mary Ann Bin-Sallik (2008)
 Emeritus Professor Helen Garnett PSM (2009)
 Emeritus Professor Charles Webb (2012)
 Emeritus Professor Barney Glover (2015)
 Emeritus Professor Steve Shanahan (2020)
 Emeritus Professor Jai Singh (2020)
 Emeritus Professor Sue Carthew (2021)
 Emeritus Professor Simon Maddocks (2021)
 Emeritus Professor Les McCrimmon (2021)
 Emeritus Professor David Price (2023)
 Emeritus Professor Greg Shaw (2023)
 Emeritus Professor Sandra Dunn (2024)
 Emeritus Professor John Wakerman (2024)

Award of Emeritus Chancellor

The Hon Austin Asche AC KC HonLLD (2010) (Deceased)
 Mrs Nancy Giese AO OBE HonEdD (2010) (Deceased)
 The Hon Sally Thomas AC, HonDUni (2018)
 Dr Richard Ryan AO HonDLitt (2021)

Our campuses and centres

Casuarina

Ellengowan Drive
Brinkin NT 0810

Waterfront

21 Kitchener Drive
Darwin NT 0800

Palmerston

80 University Avenue
Palmerston NT 0830

Education and Community Precinct

54 Cavenagh Street
Darwin City NT 0800

Katherine

Lot 5626 (16 km North of Katherine)
Stuart Hwy, Katherine NT 0852

Nhulunbuy

1468 Arnhem Road, Gove
Nhulunbuy NT 0880

Tennant Creek

63 Haddock Street
Tennant Creek NT 0860

Alice Springs

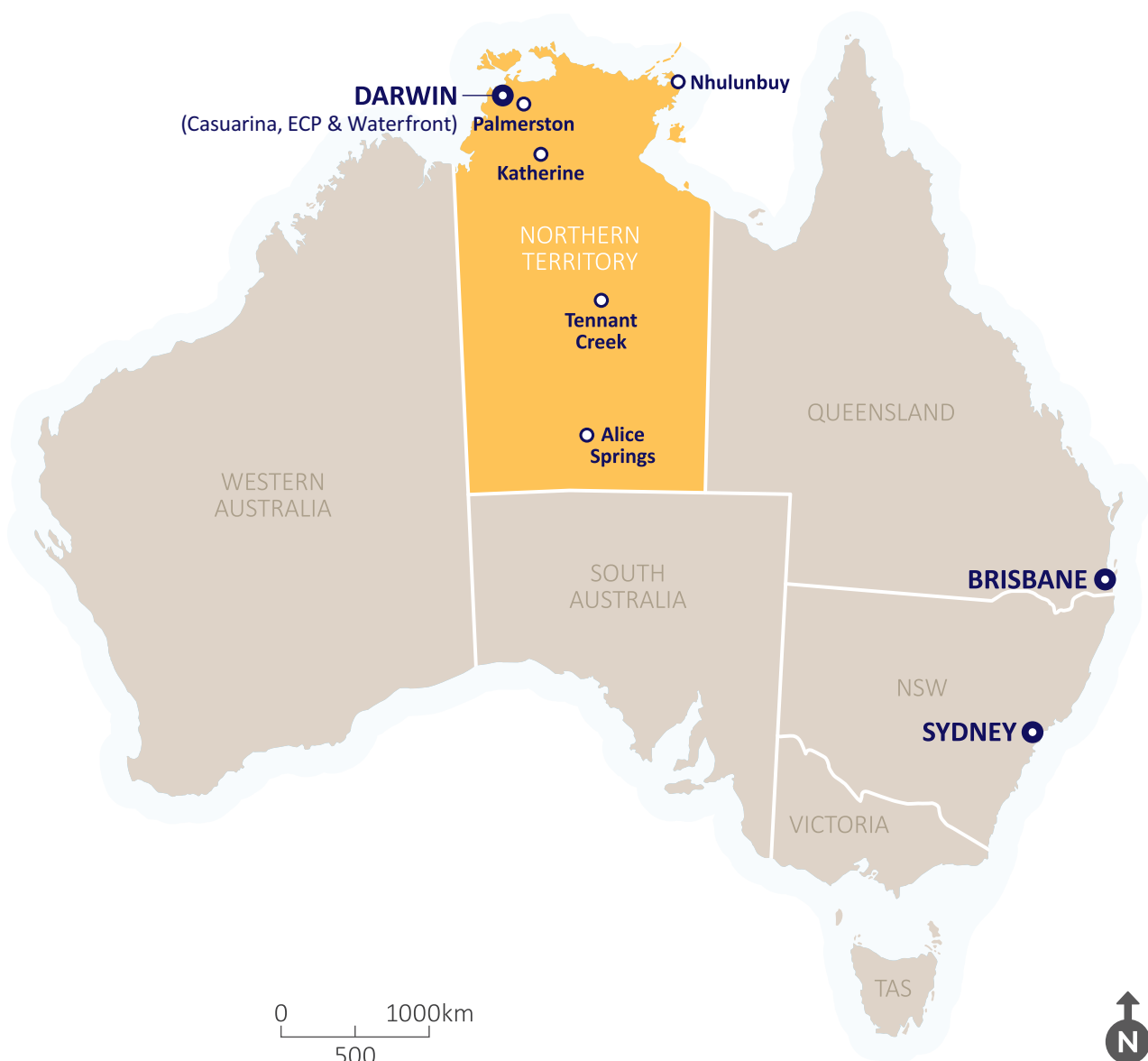
10 Grevillea Drive
Alice Springs NT 0871

Sydney

815 George Street
Haymarket NSW 2000

Brisbane

410 Ann Street
Brisbane QLD 4000



Charles Darwin University
Darwin NT Australia

T: +61 8 8946 6666

W: cdu.edu.au

CRICOS Provider No: 00300K

TEQSA Provider ID PRV12069

RTO Provider No: 0373

